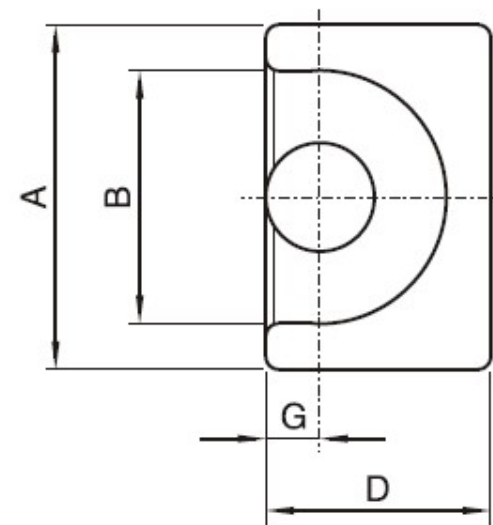
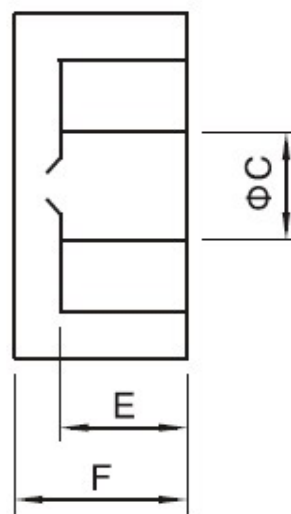
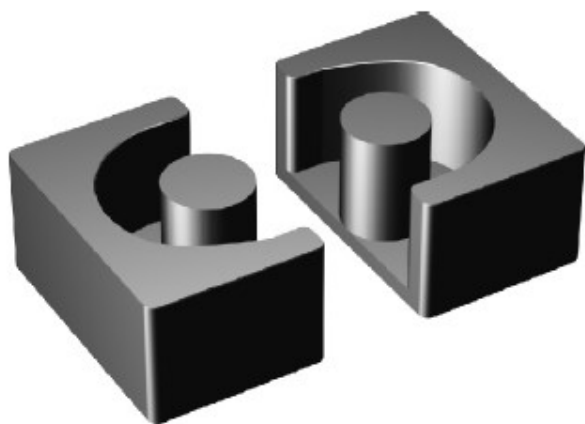


EP TYPE CORES



EP

CORE TYPE	Dimensions(mm)							Parameter Effective				
	A	B	ΦC	D	E	F	G	C1(mm ⁻¹)	Ae(mm ²)	Le(mm)	Ve(mm ³)	Weight (g)
EP7	9.2±0.2	7.4±0.2	3.40-0.2	6.5-0.3	2.5+0.3	3.75±0.1	1.8-0.2	1.52	10.3	15.7	163	1.4
EP10	11.5±0.3	9.4±0.2	3.45-0.3	7.85-0.4	3.6+0.2	5.2-0.4	1.95-0.25	1.70	11.3	19.3	218	2.8
EP13	12.5±0.3	10.0±0.3	4.50-0.3	9.0-0.4	4.5min	6.5-0.4	2.5-0.20	1.24	19.6	24.3	476	5.1